



ATLAANZ

ASSOCIATION OF
TERTIARY LEARNING ADVISORS
OF AOTEAROA NEW ZEALAND



NORTHLAND REGIONAL HUI

23 November 2021

Nā te kune te pupuke – *from the conception the increase*

Hosted by:

Te Whare Wānanga o Waikato (University of Waikato)

Te Kuratini o Waikato (Wintec)

Waipapa Taumata Rau (University of Auckland)



Table of Content

Theme	3
Tikanga - Protocols.....	3
Participation.....	3
Venues.....	3
Programme	5
Session 1 Presentations (10 am – 12 noon).....	6
Whiria te tangata ka puta he oranga: Weaving people together promotes wellbeing	6
He akoranga tōmua i te ao i te pō: <i>An online preparation study skills course for Māori and Pasifika students.</i>	6
Nāku te rourou, nāu te rourou ka ora ai te iwi – With your basket and my basket, we will sustain everyone.....	7
MATA: Pono, Taki, Tau	7
Session 2 Presenters (1 – 3.00 pm)	8
What does a learning advisor do to best support an international nursing student to pass her placement - what inclusive and accepting diversity means for our practice as learning advisors?	8
Developing an ATLAANZ professional accreditation scheme	8
Paddle your way into collaborative learning: The use of Padlets.....	9
All above board: Play the Academic Integrity board game online	9
Evaluation	10
Who we are.....	10
Contact us	10



Northern Regional Hui

1

Theme

This regional hui is explorative. The focus is on **‘emergent concepts or practices’** (still in development or in practice) that may help any present or future Learning Advisors and affiliated supports **to normalise EDI (equity, diversity, inclusivity)** practices in teaching and learning domains.

2

Tikanga - Protocols

We ask that you have your camera on during Karakia / Whakatau formalities. For each speaker, there is a corresponding waiata.

3


Participation

We have asked presenters to be as ‘interactive’ as possible and we encourage the sharing of stories, whakawhanaungatanga (connectedness) and creative ideas and practice.

4

Venues

Presentations may occur in three ways:

- ZOOM Only
 - ZOOM & Workshop Blend
 - Workshop Only
- 

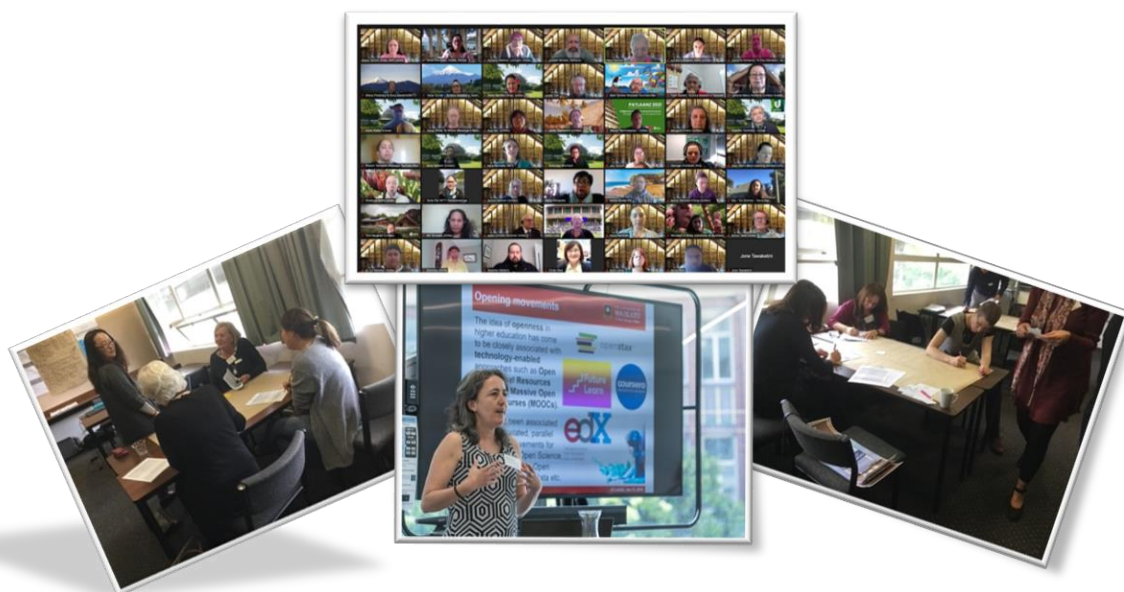
Participants – your voice matters!

As participants, we encourage you to be active in the following ways:

- Please sign in (Hardcopy or via Chats) Your Name, Institute, Position
e.g., Hohepa Bloggs, Reality Institute, Learning Tutor
- Participate in any activities provided to make it meaningful for you and your peers
- Ask questions, put suggestions / links in chats
- Share your story
- Provide us feedback via the evaluation at the end

Nā te kune the pupuke – from the conception the increase!

*Participating in developing and exploring, emergent and creative ideas
and practices for EDI (equity, diversity, inclusivity)*






Programme

TIME	ACTIVITY
9.15 am	Sign in can begin ... (cameras on, mic off, no eating please) Link: https://wintec.zoom.us/j/82379074558
9.30 am	Karakia / Whakataui
9.45 am	Whakawhanaungatanga ACTIVITY
10.00 – 12 pm	Session 1 Presentations *
12 – 1.00 pm	Kai tahi – Lunching together. Join us online for casual conversations over lunch. https://wintec.zoom.us/j/82379074558
1.00 – 3.00 pm	Session 2 Presentations *
3.00 – 3.30 pm	Whakakapi – Summary and closing Link: https://wintec.zoom.us/j/82379074558

* **Presentation links can be found** under each presentation title starting **from the next page onwards**. Workshops will vary in length; please take note of when each presentation starts. If there are no attendees within 15 mins or so, presenters may wish to join another session in that time slot.



Session 1 Presentations (10 am – 12 noon)



Whiria te tangata ka puta he oranga: Weaving people together promotes wellbeing

Presenters: Dulcie Brake & Glenis Wong-Toi – Learning Advisers (University of Auckland)

Link / Room: <https://auckland.zoom.us/j/9504539638>

Duration: **Starts 10 am**, 2-hr presentation

Navigating the University space can be challenging for any new student. However, for a student with ADHD or ASD, this can be even more difficult. A solution was to establish peer support groups. Inclusive Learning has oversight of the groups by providing space, administration, kai and support, but the groups are led and run by students with ADHD or ASD. The groups are safe, supportive environments for students to meet other students with similar experiences and find out how others are overcoming challenges (i.e., technologies, strategies, or techniques). Starting in 2019, the groups have become increasingly popular. We welcome the opportunity to share our experience with some anecdotal commentary from students, how the groups have evolved in accordance with the divergent needs of the members and our thoughts for future directions.



He akoranga tōmua i te ao i te pō: An online preparation study skills course for Māori and Pasifika students.

Presenters: Tania Oxenham & Marion Tahana – Senior Academic Learning Advisors, (Wintec)

Link / Room: <https://wintec.zoom.us/j/82379074558>

Duration: **Starts 10 am**, 2-hr interactive wānanga.

It's no surprise that creating a virtually responsive space for Māori and Pasifika (M&P) students is challenging; however, modern technologies are the new frontier for tried and tested as well as emerging M&P approaches for use with diverse groups and cultures. We will share what we're doing to create an 80/20 Moodle course specifically for M&P students around developing their study skills in preparation for studying at Wintec. Then we will invite participants to be outrageously creative with their ideas and aspirational suggestions that either confirm or builds on our ideas for making tertiary teaching and learning spaces responsive to EDI (equity, diversity, inclusivity) normalisation.



Nāku te rourou, nāu te rourou ka ora ai te iwi – With your basket and my basket, we will sustain everyone.

Presenters: Mona O'Shea, Senior Tutor (Waipapa Taumata Rau – Auckland University), & Diane Tamati, Academic Development Lecturer (Te Whare Wānanga o Wairaka - Unitec)

Link / Room: <https://auckland.zoom.us/j/96236461277>

Duration: **Starts 10 am**, 2-hr presentation

The first Covid19 lockdown in 2020 meant that Māori and Pasifika (MP) support services needed to shift its mahi into the online space. MP services responded with care and vigour by drawing on our cultural values and practices to navigate this newish platform for teaching and learning. Some of our staff were not well equipped to cope with the sudden demand to shift online. Due to our long-standing relationships, Te Fale Pouāwhina and MAIA took the initiative to collaborate by providing administrative, academic and program support. Additionally, this collaboration enabled our programs to create new opportunities for both staff and students to care for their hinengaro, wairua, tinana and whanau. This holistic collaborative approach is best captured in the Māori whakatauki 'Nāku te rourou nāu te rourou ka ora ai te iwi'. A pleasing outcome of this cross institutional collaboration is the renewed va between tauira and tauira, tauira and staff. In this talanoa, we will share our insights on what worked/not.



MATA: Pono, Taki, Tau

Presenter: Horomona Horo, Kaiāwhina, Performer, Researcher (Wintec)

Link / Room: <https://wintec.zoom.us/j/81345162466>

Duration: Starts **10.00 am**, 2-hr workshop

MATAPONO – Principle

MATATAKI: Challenge

MATATAU: Proficiency

'Mata' in many nations of the Pacific is referred to 'Eyes', and its many references of being the eyes of, or seeing through the eyes. Through culture we inadvertently see things through the eyes of our upbringing, so we automatically have certain views of what principles we are raised with, what different challenges we face, and how through our experiences bring with us an array of knowledge, understanding and expertise. During this workshop the participants will hear stories and will go through various wānanga/learning modes of exploring our diverse cultures, learning skills from traditionally inspired and creative new ways of communication with and for our student population, as well as interweave these into a flowing ongoing conversation of connection...



Session 2 Presenters (1 – 3.00 pm)



What does a learning advisor do to best support an international nursing student to pass her placement - what inclusive and accepting diversity means for our practice as learning advisors?

Presenter: Hua Dai, Senior Lecturer of Academic Development (Unitec)

Link / Room: <https://unitec-ac-nz.zoom.us/j/8014515496>

Duration: **Starts 1.00 pm**, 1-hr workshop

This case study reports on my support of a nursing student who failed her placement twice but passed all her theoretical assessments while on campus. When she failed in her second placement with the effort on merely improving her English Language skills and interpersonal skills, my professional training as a psychosynthesis counsellor and readings of Kegan's constructive-developmental perspective of human development became useful. I focused on supporting her to find her inner strength and courage as well as self-belief. It was done through supporting her to get her prepaid year-long-bond back on a flat from a difficult landlord, thus the student realized that she could believe in herself and in her capacity to achieve her goals when supported. She passed her third placement and has happily returned to her nursing class. The study suggests that learning advisors' work eventually involves supporting students as human beings on their evolutionary journey. Discussions and interaction with colleagues is anticipated following the case study to help expand my knowledge.



Developing an ATLAANZ professional accreditation scheme

Presenter: Deborah Laurs, Assistant Manager at Student Learning (Victoria University)

Link / Room: <https://vuw.zoom.us/j/2421541519>

Duration: **Starts 1.00 pm**, 1-hr workshop

Increasingly, there are calls to promote learning advising as a profession. Building on the UK's 'certified practitioner' programme <https://aldinhe.ac.uk/aldinhe-professional-accreditation/> this session will invite participants to share their views on relevant professional attributes and evaluation processes, which might potentially contribute to the development of an 'ATLAANZ accreditation scheme' that formally acknowledges our profession's specialist knowledge and skills.



Paddle your way into collaborative learning: The use of Padlets

Presenters: Maryam Mariya & Andrea Haines, Senior Tutors at Student Learning, Centre for Tertiary Teaching and Learning (CeTTL), (University of Waikato)

Link / Room: <https://waikato.zoom.us/j/4091351387>

Duration: **Starts 2.00 pm**, 1-hr workshop

For many years, Student Learning, at The University of Waikato, has been offering face-to-face writing retreats for research students from all divisions. However, in the last two years, some of these events have not been possible due to Covid-19 restrictions. Therefore, as organisers, we looked at ways to provide an online retreat environment in which students would experience a sense of togetherness and be able to share, learn and collaborate as they can in a physical setting. The Padlet application, an interactive tool, seemed to offer potential to meet our aims. We have used Padlet in a number of retreats and not only received positive feedback but also gained access to useful resources we can use in the future work with students.



All above board: Play the Academic Integrity board game online

Presenter: Katherine Gilliver-Brown, Senior Tutor at Student Learning, Centre for Tertiary Teaching and Learning (CeTTL), (University of Waikato)

Link / Room: <https://waikato.zoom.us/j/83453213499>

Duration: **Starts 2.00 pm**, 1-hr workshop

Participants in this session will play the Academic Integrity Board Game in teams. The purpose is to use the activity to stimulate reflection on approaches to academic integrity instruction in tertiary institutions. The session will finish with discussion about how our own understanding of academic integrity was inculcated and became embedded, and the way this process might lead to assumptions about what students know. We will share what institutions are doing to provide safe, culturally appropriate, inclusive, equitable and effective opportunities for academic integrity learning. Acknowledgement: the original AIBG was developed by Dr Amanda White et al., UTS Business School, University of Technology, Sydney.



Evaluation

E kare mā, thanks for joining us today. We're keen to hear back from you about your experience of the Northern Regional Hui 2021. Would you take a moment to fill in [this form](#) which shouldn't take more than 5-10 minutes.

Who we are

ATLAANZ is an association of professionals working in academic advisory roles in tertiary institutions in Aotearoa New Zealand (*Aotearoa* is the Māori name for New Zealand, meaning "the long white cloud"). ATLAANZ means Association of Tertiary Learning Advisors Aotearoa New Zealand.

ATLAANZ has a constitution and is an incorporated society. Members of organisation are staff (full and part-time staff) of universities, polytechnics, wānanga, colleges of education, institutes of technology as well as private institutions providing tertiary training.

This northern regional hui happens biennially (every two years), alternating with the ATLAANZ National Conference. Its boundaries and tertiary institutes involved extend from the top of the North Island through to Tauranga on the east coast across to Rotorua and Taupō in between, back up through the Waikato and on to Tāmaki Makaurau (Auckland).

Contact us

Organisers for this regional hui are:

Te Whare Wānanga o Waikato (Waikato University)
Te Kuratini o Waikato (Wintec)
Waipapa Taumata Rau (Auckland University)

- katherine.brown@waikato.ac.nz
- tania.oxenham@wintec.ac.nz
- matt.tarawa@auckland.ac.nz

[ATLAANZ Membership](#) (hyperlinked)

Annual membership is only \$40 per person; this low cost is only available to the end of 2021. Pay for your 2022 membership now. Becoming an ATLAANZ Member offers these benefits:

- contributions from a network that informs and enhances institutional and individual practice via expert advice and knowledge sharing
 - the opportunity to participate in ATLAANZ activities, including professional development opportunities, usually at a reduced rate
 - Free attendance to one of three annual regional hui
 - discounted members' registration fee for ATLAANZ's symposium and conference
- 